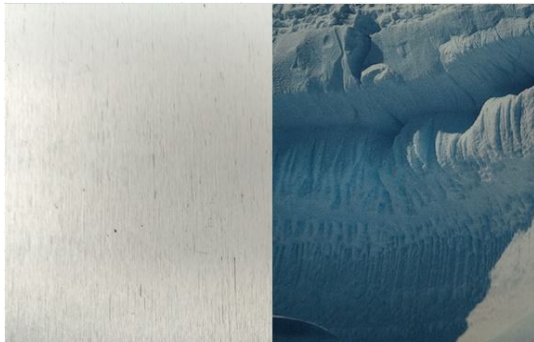


## Blacha cynkowo-tytanowa VMZINC

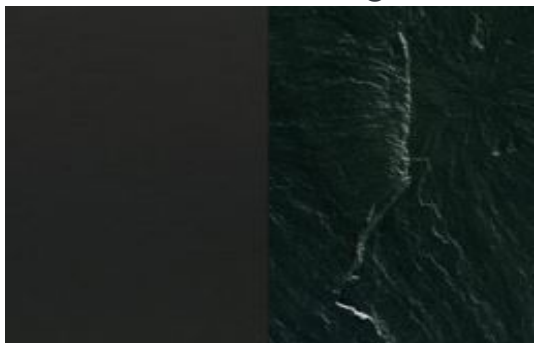
**NATURAL- ZINC®**



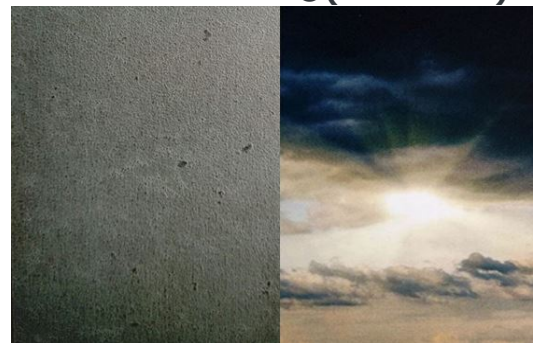
**QUARTZ-ZINC®**



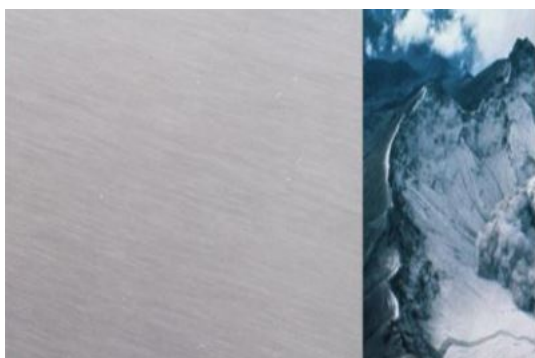
**ANTHRA- ZINC®**



**AZENGAR®(struktura)**



**PIGMENTO® blue**



**PIGMENTO® red**



**PIGMENTO® green**



**PIGMENTO® brown**

